



Elefine

11 YEARS MANUFACTURER BY SECURITY

Shenzhen Elefine Technology Co., Ltd.

SAFETY&TRAFFIC SOLUTION PROVIDER

Web:www.elefinetech.com

E-mail: info@elefinetech.com

Add: B716 Niulanqian Building, Minzhi, Shenzhen, Guangdong, China

 **COMPANY PROFILE**

Shenzhen Elefine Technology Co., Ltd. was founded in 2010, our company produces boom barriers, turnstiles, parking systems, face recognition terminals, parking locks, bollards, reflective vests, cameras, and solar road lights. Now our factory covers an area of 3,000 square meters and currently employs more than 100 people, including 20 senior and mid-level engineers and technicians. We have 7 production lines and goods are exporting worldwide and have a good reputation.

Shenzhen Elefine Technology Co., Ltd. has developed into a set of production management, research, and service in one group of key enterprises, is always adhere to the "people-oriented, innovative development" business philosophy, the pursuit of scientific and technological progress. Our company vision is to lead safety control industry change and development and create a global e-commerce company.

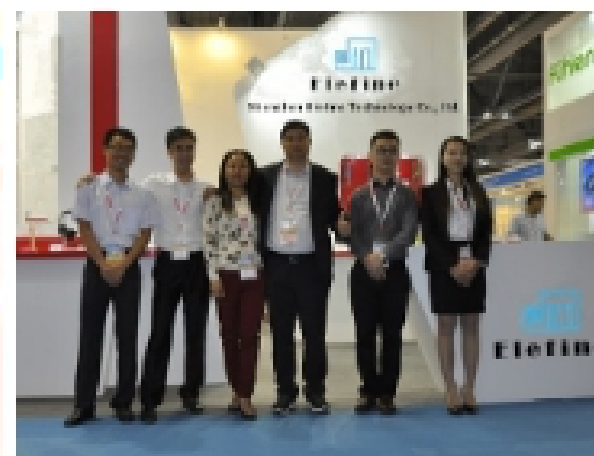
Team

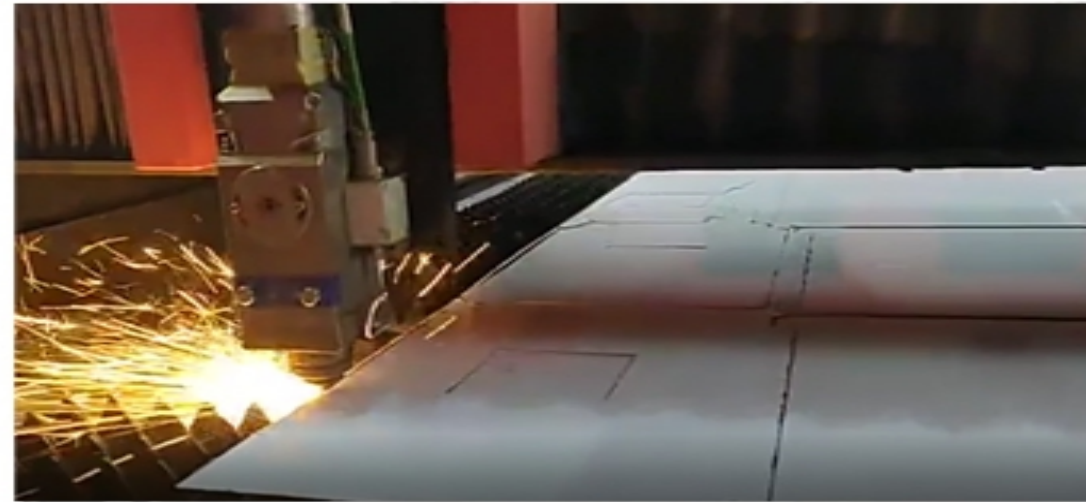


Clients



Exhibition





Intelligent Parking Lot System



The smart parking lot industry has entered a period of rapid development in recent years, and the traditional parking lot system has been unable to meet the diverse needs of consumers. From traditional single entrance control to today's automatic parking, license plate recognition, unmanned charges, and so on. The development trend of intelligent parking lots has the following aspects:

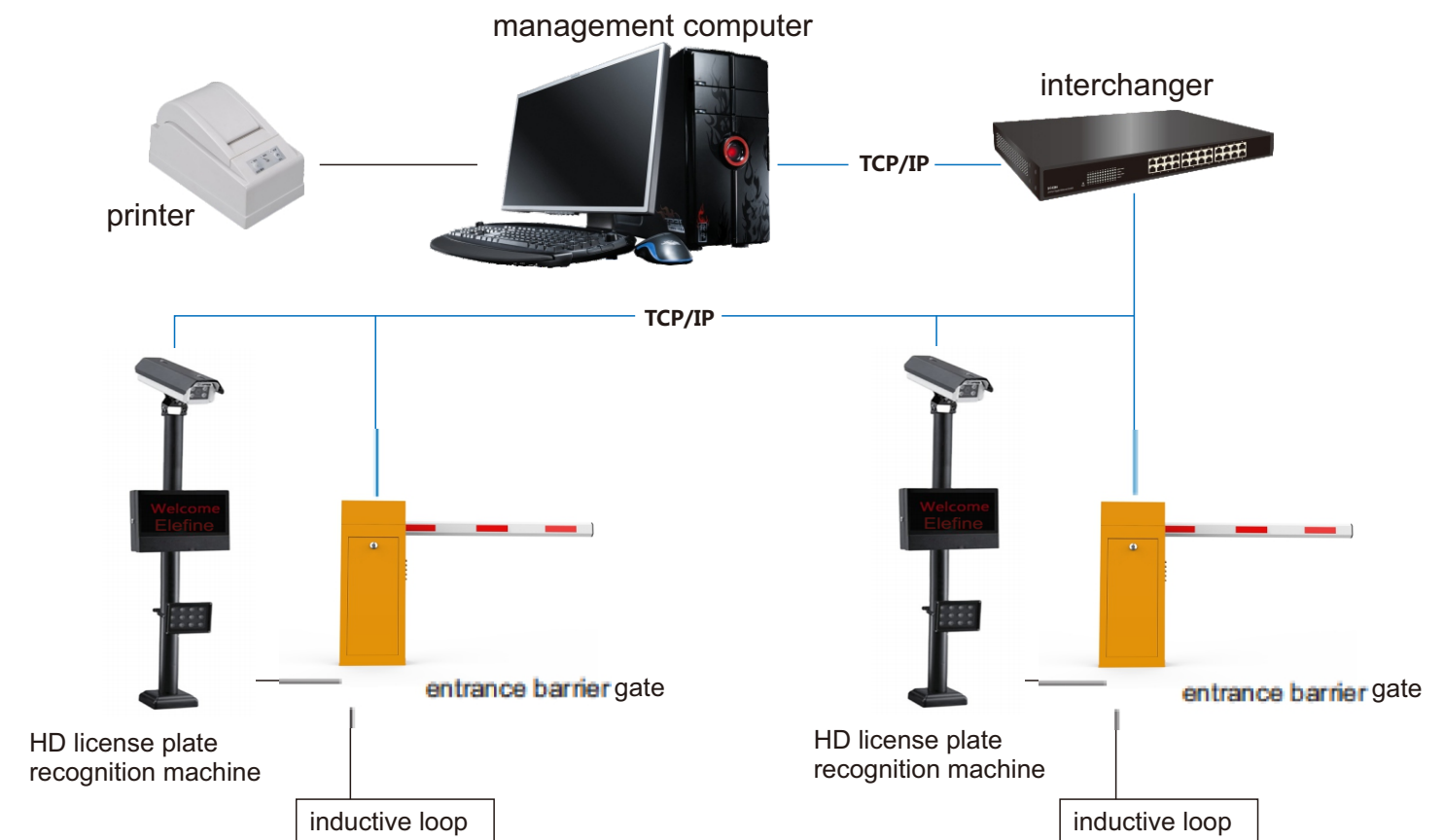
1. Network sharing data, breaking information islands, building smart parking Internet of Things platform, enabling parking guidance, parking space reservation, electronic automatic payment, fast access and other cloud parking functions
2. The unmanned service is gradually popularized, the labor cost is increasing, the human tactics are outdated, the participation of smart phones and mobile Internet, the future smart parking lot must be highly unmanned management.
3. Traditional card-to-license recognition, simplifying and simplifying, gradually abandoning the habit of the owner to enter and leave the card, to achieve automatic identification of the license plate, improve efficiency, avoid multiple users using the same card, and other issues.

The development of smart parking lots in China is getting better and better, and the whole day is on the rise. Pressing technology as the leader in the technology of China's parking lot industry has always kept close to the market demand, and the products are new and stand on the top of industry development.

Five Major Selling Points of License Plate Recognition

1. **Hardware identification:**
that is, it is completely different in the camera, and then the recognized license plate information is transmitted to the software for comparison analysis;
2. **Digital network camera integrated machine:**
that is, camera photo recognition module is combined, easy to install and maintain;
3. **The monthly car can be used offline:**
there is a storage chip, which can transfer the information of the monthly car to the one machine. It is very convenient without a computer, especially convenient for units or communities without temporary vehicles;
4. **High recognition rate:**
the recognition rate of license plate recognition system developed by our company is over 99%;
5. **Virtual sense of ground:**
no need to change the sense of the ground, but through the software virtual one license plate recognition area, you can achieve the real sense of the effect, greatly reducing the construction difficulty.

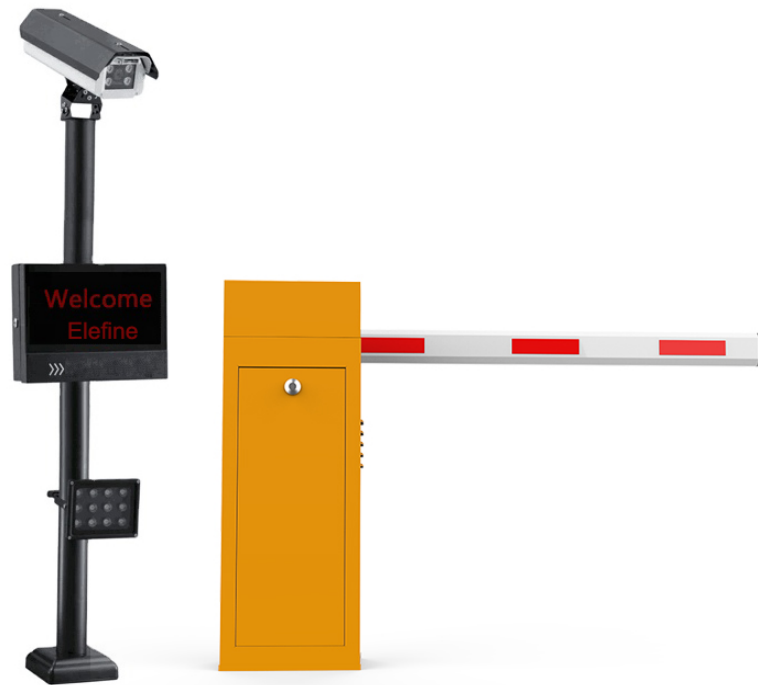
Topological Graph



License Plate Recognition System With Boom Barrier



License plate recognition system with boom barrier

**Main Function:**

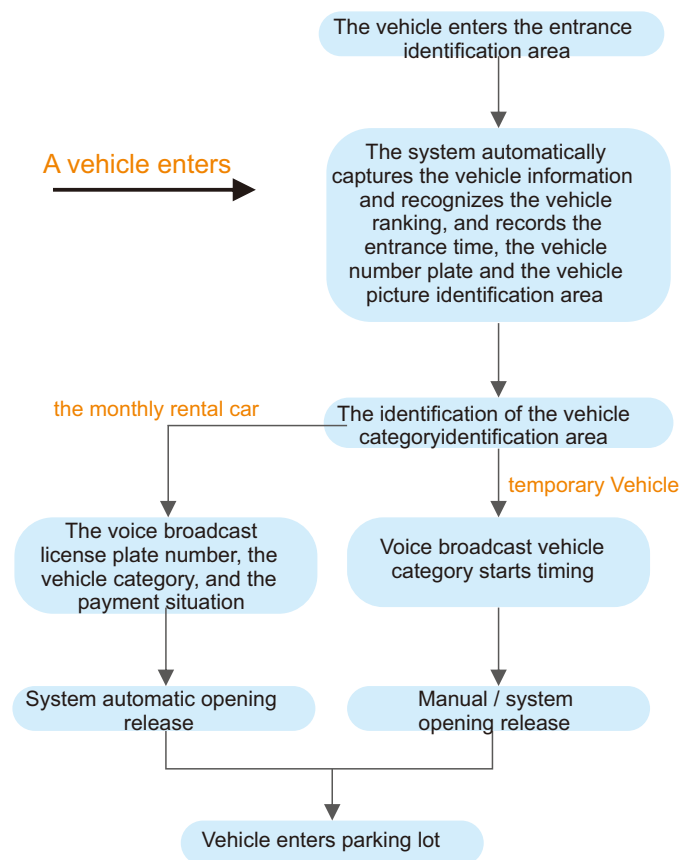
1. Integrated HD license plate recognition, recognition rate >99.99%
2. Integrated parking controller, charging, display, voice, switch
3. Integrate 4 lines and 4 words to display large screen, display identification vehicle information, and publish advertisements
4. Integrated highlight fill light
5. Support TTS universal voice broadcast, users can set personalized voice
6. Support tcp communication
7. The display can be rotated 30 degrees left and right
8. Multi-punch waterproof, dustproof, anti-shake design, user safety and peace of mind
9. Highly integrated (only one power supply, one communication line, one open brake line)
10. Appearance is noble, stylish, atmospheric

License plate recognition system with boom barrier

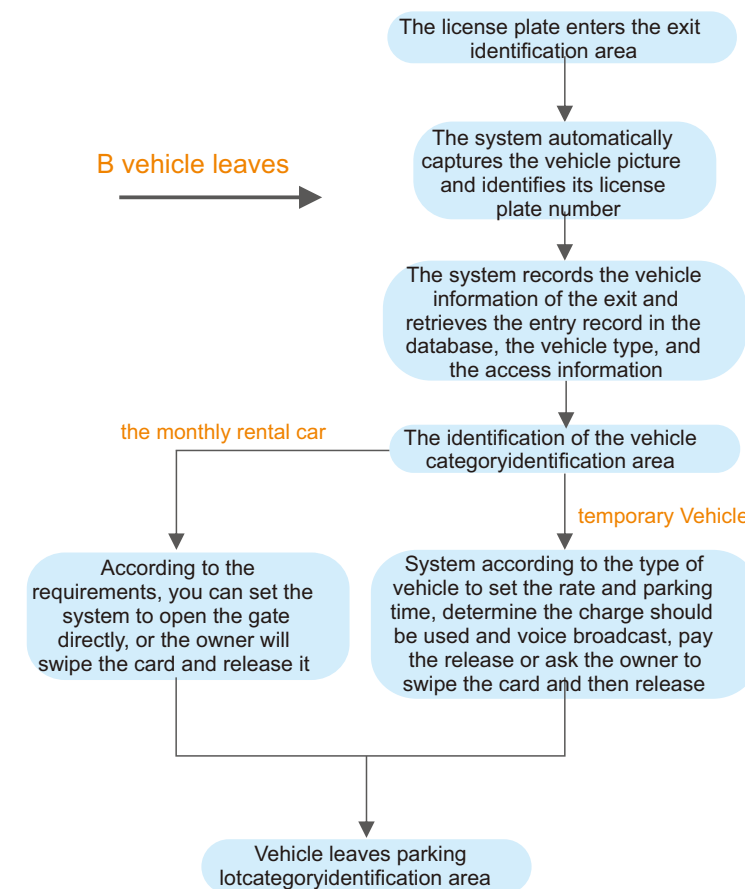
**Parameter Description:**

Operating voltage: AC 220 V
 Working environment temperature: -25 ° C - 60 ° C
 Relative humidity: <=95%
 Communication interface: Rs485
 Longest communication distance: 1200 meters

License Plate Recognition System Flow Chart



1. The vehicle enters the identification area
2. The license plate recognition camera automatically scans and recognizes the license plate number, and then retrieves the video through the camera to find the clearest picture and transmits it to the computer database, which is presented to the online monitoring screen through software.
3. If the vehicle is not full or the vehicle is in a fixed vehicle condition, the gate is released, and the vehicle entry time is recorded. The vehicle passes over the entrance and enters the parking lot. The gate automatically closes and the system automatically refreshes the parking space information.
4. The whole process is completed automatically, without the intervention of the staff, the vehicle is always in driving state, no need to stop.

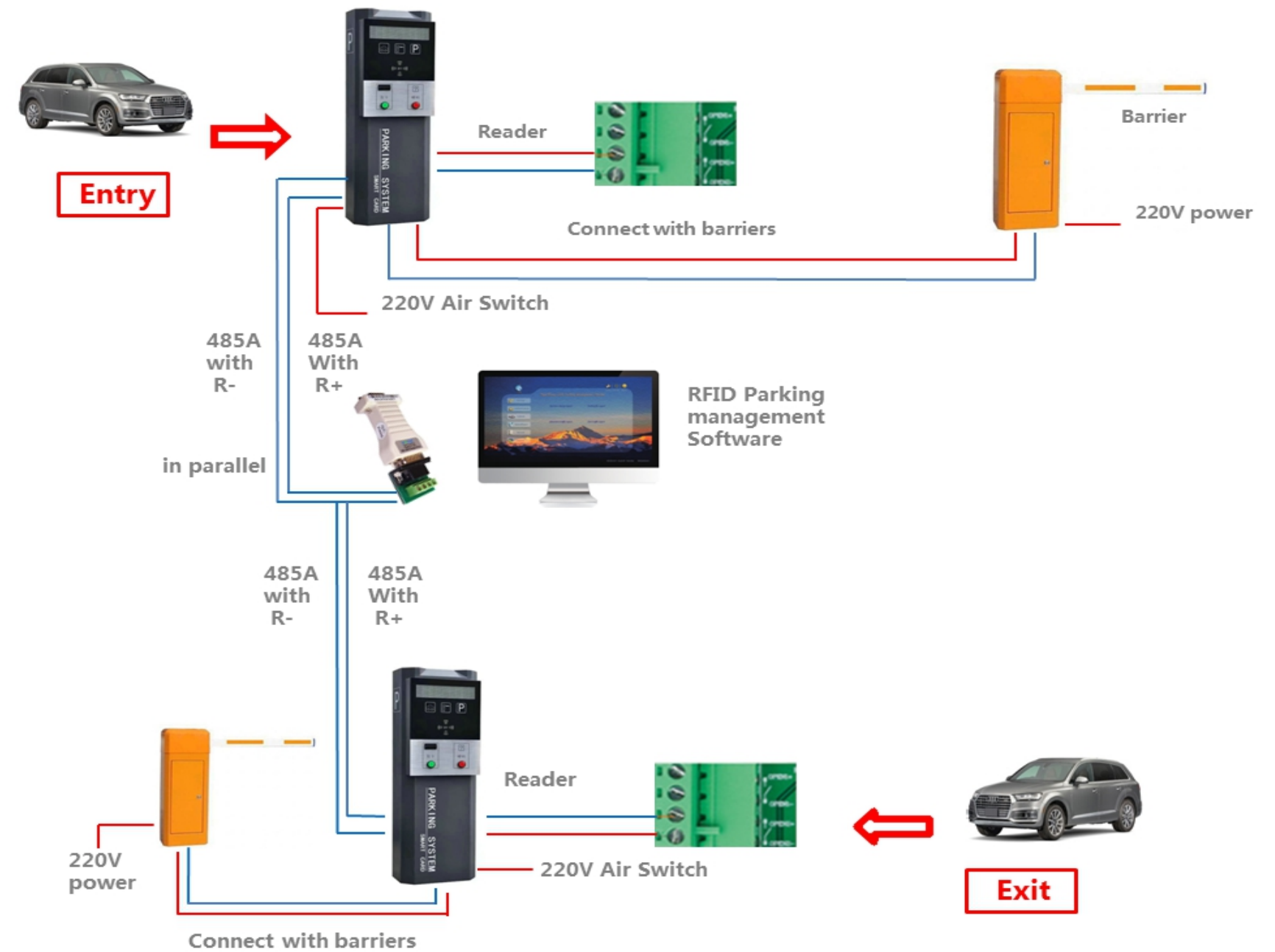


1. The vehicle leaves the license plate recognition area
2. The license plate recognition system automatically recognizes the license plate number and then retrieves the license plate category by searching the data.
3. The computer displays the validity period of the car (VIP or monthly car) or the balance (recharge card), the amount of the charge (temporary car), and other prompts.
4. If the vehicle is in a fixed vehicle condition, the gate will automatically release the lever, and the computer will recall the image captured during the entry of the vehicle, the admission time, and so on. If it is a temporary car, the vehicle must be suspended to leave. If the vehicle is blacklisted, whether it is a temporary or fixed vehicle, the gate will not open, and the system will send out an alarm signal to inform the staff.
5. The vehicle crosses the exit and leaves the parking lot. The system records the departure time of the vehicle and the system automatically refreshes the parking space information.

Intelligent Parking Lot



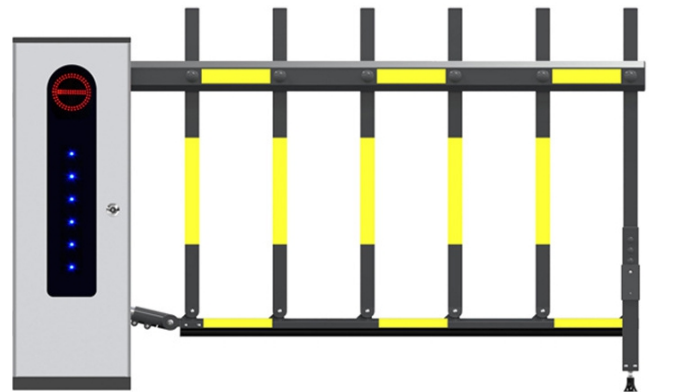
Optional colors red orange gray



System Features

1. It can be combined with the in/out card reader at the same time, and the fixed vehicle can realize the non-stop card reading and manage it more scientifically.
2. Real-time dynamic monitoring equipment, real-time monitoring of the status of the card machine and the number of stored cards, and display on the screen
3. The security of funds, the system records illegal incidents (such as automatic opening, manual opening, etc.), can be monitored, effectively avoiding the loss of funds due to negligence or intentional cheating of the duty officer
4. Can be offline, off-network operation, the system can still work normally in the case of network or computer failure; when the computer and network are repaired, the offline records in the control will be automatically uploaded to the computer for saving, effectively Guarantee system runs 24 hours a day
5. Other expansion functions: support central charging function, automatic license plate recognition (car and card binding)

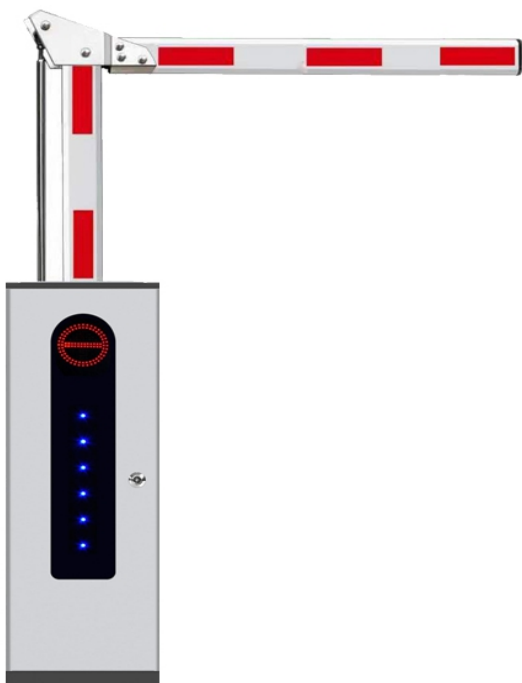
High-speed Barrier Gate



Optional color   
orange yellow gray

Performance Characteristics

The operation mode is manual or remote control, accepting the card signal lifting, combined with the ground sense coil;
The pole lift is gentle and reliable, and the adjustable time is 1.5~6 seconds;
The unique manual clutch device is light and compact, and the pole can stay at any angle;
Made of pure copper movement;
Infrared sensor anti-tamper function;
Support external and built-in sense;
With a time-delay function;
Fast heat dissipation to prevent crashes due to overheating of the movement;
The shape of the chassis is treated with a special process to reach the highest level in the industry.



Optional color   
red blue gray

Technical Parameters

Power supply voltage: 220V/±%
Voltage frequency: 50/60Hz
Rated power: 90W
No-load speed of the motor: 1400 rpm
Self-contained pole with resistance rebound function
Traffic light interface: (220VAC)
Remote control distance: ≥ 30 meters
Rod length: within 6 meters, within 5 meters of folding rod
Rod material: aluminum alloy
Chassis size: 350 x 280 x 1060mm
Pole size: 100 x 45 m
Average number of failures: greater than or equal to 3 million times
RS485 interface optional
The following types of lever gates are available:
Folding arm (1-5m) Fence pole (1-5m)



Technical Parameters

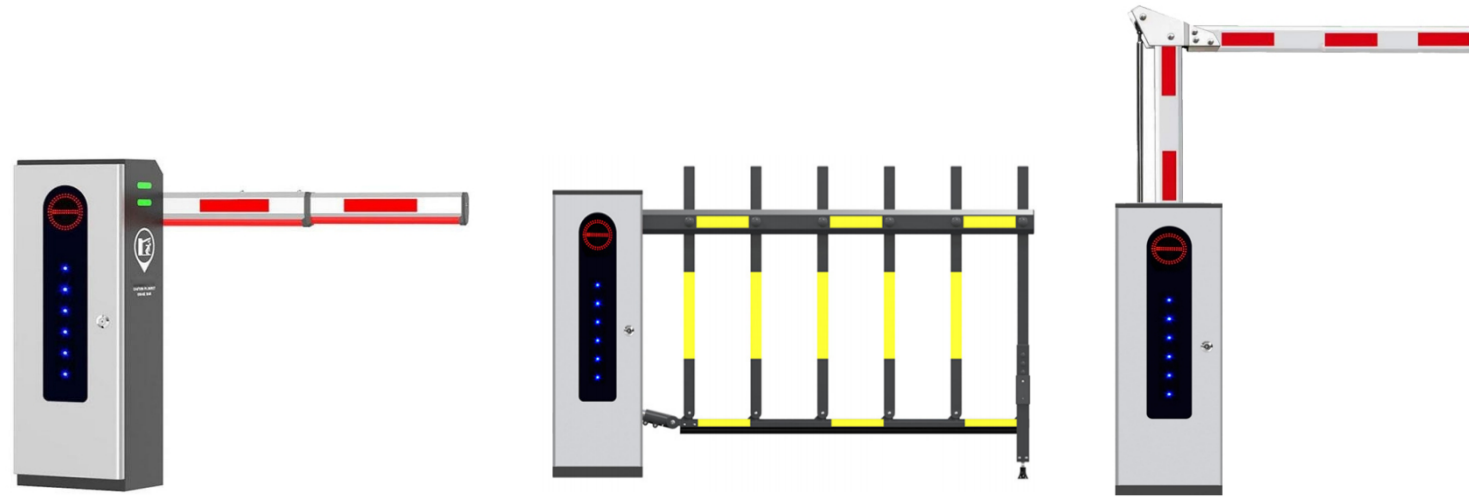
Standard color: orange, gray
Chassis size: 350x350x1050 mm
Can be equipped with: octagonal pole below 4 meters
Speed: 1.5~4 seconds
Ambient temperature: -25°C~60°C
Relative humidity: 5%~95%
Voltage: 200V/50Hz
Remote control distance: 30m
Dimensions: 405x292x1019mm
Installation size: 235x235x172mm
Power: 150W
Gate center height: 880mm
Gate type: standard straight rod
Communication protocol: RS-485 interface, up to 1200 meters
Working power supply: AC220V±10%V (50Hz)

High-speed Gate Performance Characteristics

Turbo drive, simple structure, durable, stable and reliable
State-of-the-art balancing mechanism ensures smooth, balanced operation
Modular design, standard terminal block output strong and weak electrical partition separation, full circuit non-contact control, ensuring reliable operation
An anti-mite control system is added to ensure the safety of the vehicle, and the emergency department is manually lifted and lowered;
Control input/output sections use optocoupler relays to block electrical shock
The gate lift time is only 1.5 seconds
3 million service life, no pollution, no wear, no need for lubricant maintenance
The ground sense coil controls the automatic drop lever after the vehicle has been tested, and has the function of preventing the brake.

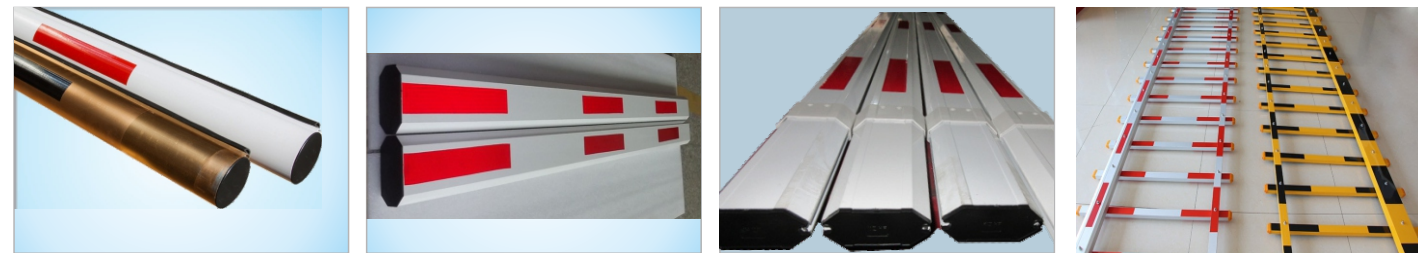
Servo high-speed boom barrier





Housing Parameter

Housing material: stainless steel with varnish stoving
Working temperature: AC220V ±10%, 50 Hz
Motor type/ rated power: DC variable frequency motor/140 W
Life span: ≥ 2 million times
Torque: 70 N*m
Running time: 1 ~ 6 seconds, adjustable
Housing size: 350mm * 280mm * 1060mm
Working temperature: -40°C ~75°C



Oval shape arm

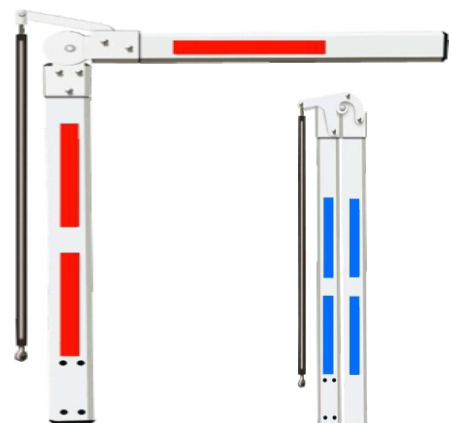
Octagon shape arm

Retractable arm

Barrier

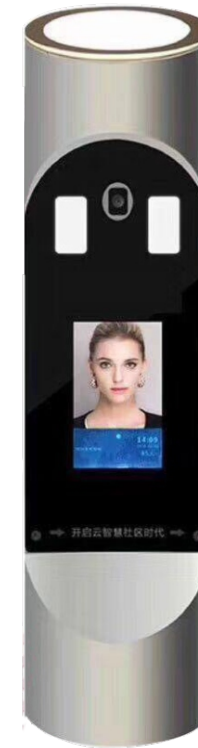
Arm Parameter

Arm shape: Oval/Octagon
Arm type: straight arm/ folding arm/ barrier
Color: red&white/ blue&whit/ black&yellow/ gold
Material: Aluminum alloy, with surface spray treatment
Arm length: 1 ~ 6 meters adjustable, 3 ~ 6 meters for(Retractable arm)
Thickness: 1.2 mm



Folding arm 90 degrees and 180 degrees

Cylinder Face Recognition System



Screen	Size: 5 inch, 170°IPS Liquid Crystal Display Resolution: 480 * 854
Camera	Pixels: 2 mega pixels Type: RGB camera Aperture: F2.4 Focal length: 6 mm White balance: Automatic Wide Dynamic: Supports
Core Parameter	CPU: Quad Core, 1.8 GHz Device interface: RAM 2GB, storage capacity 8GB
Interface	Audio: 1 channel audio output Video: 1 channel HDMI 2.0 Type-A Serial communication interface: 1 RS232 Interface Relay output: 1 relay interface Reset interface: With RESET button on the extension cord Internet interface: 1 RJ45 10M/100M adaptable Ethernet interface
Function	Face detection: Support detecting/tracking 5 persons at the same time 1: N face recognition: When false recognition is 0.03%,Face recognition accuracy is 99.7% Stranger detection: Support Recognition distance configuration: Support UI interface configuration: Support Device remote upgrade: Support Deployment method: Support public network, LAN
General Parameters	Protection level: IP42, with a certain dust-proof /water-proof fuction Power supply: DC12V (±10%) Working temperature: -10°C~60°C Working humidity: 10%~90% Power: 10 W Max Device size: 560 *φ114mm (Height * Diameter) Weight: ≈5kg

Cylinder Face Recognition System

Product Features



- 1, support for external large screen;
- 2, Dynamic double-camera identification for anti-counterfeiting, completely solving the deception of photos;
- 3, With night infrared, RGB light;
- 4, Support the insertion of 4G network card wireless Internet access;
- 5, Support the storage of 100,000 face photos, 1 million identification records;
- 6, Support 1:1 face comparison, and 1:N face recognition;
- 7, 1:N recognition accuracy is high, the face database is 10,000 (recommended face database is not higher than 10,000), there is only one in ten thousand false recognition Rate, passing rate is 97%, and 1:1 face recognition accuracy rate reaches 99.7%;
- 8, The recognition speed is fast, face tracking and detection takes about 20ms, face feature extraction takes about 200ms, face comparison takes about 0.1ms;
- 9, Support stranger detection, stranger's level can be configured;
- 10, Support the preservation of live photos when taking face recognition or stranger detection;
- 11, Support multiple deployment modes such as public cloud, private cloud and local area network;
- 12, Support the interface and support the building system;
- 13, Support identification distance configuration;
- 14, Support screen display content configuration.

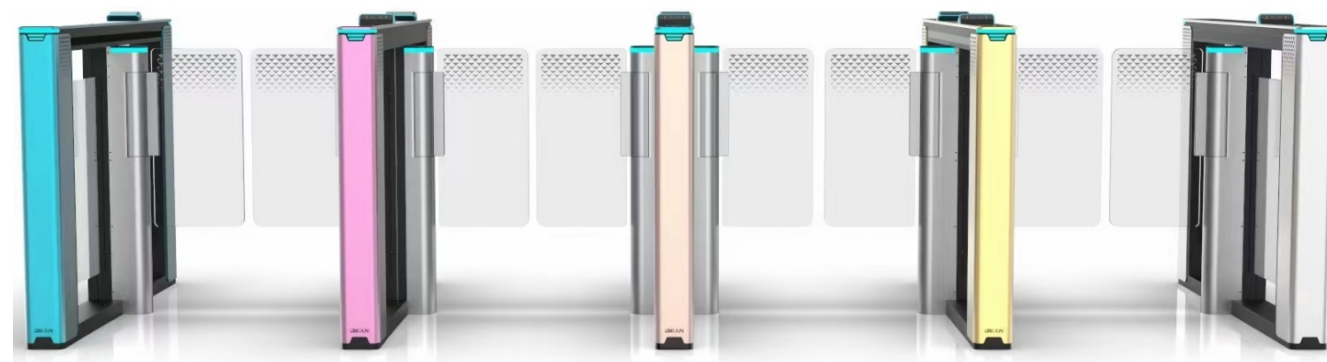
Product Parameter

Housing material: aluminum alloy
Size: 120mm*217mm
Camera: 2 mega pixel HD imported camera
Working temperature: -10 ° C ~ 60 ° C
Working humidity: 10% to 90%
Power consumption: 10W
Installation method: wall bracket installation, turnstile bracket installation
Fill light: infrared, LED light

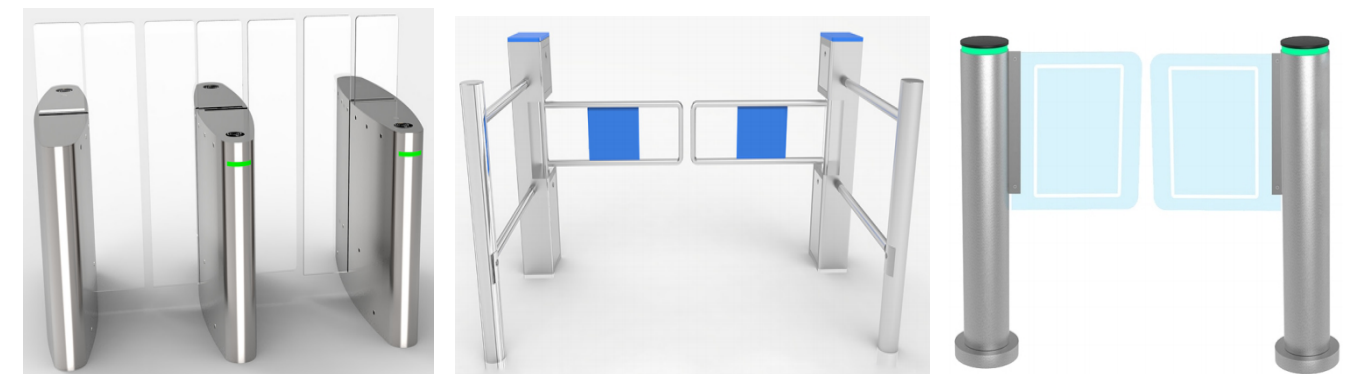
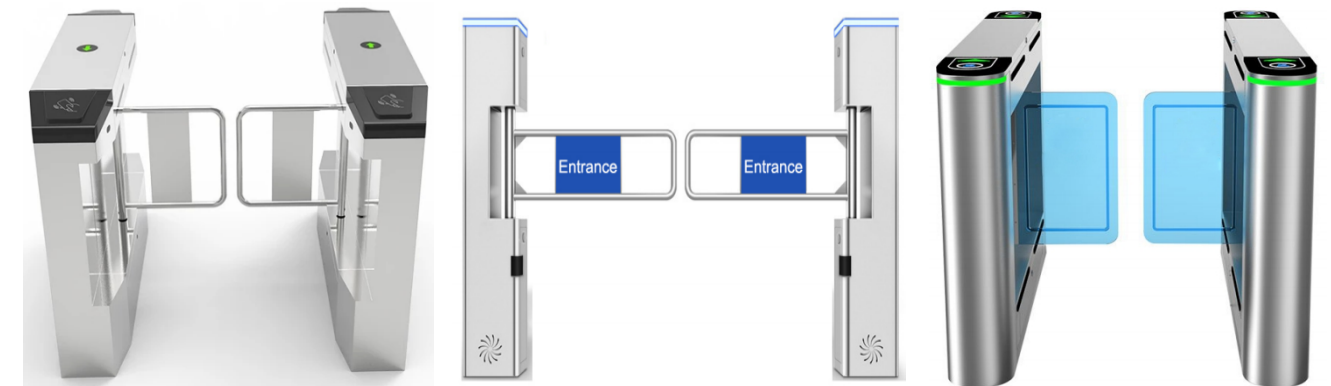
System: Android
CPU: quad core 1.8GHZ
Display: 7-inch IPS LCD screen
Power: DC12V
Weight: ≈ 2KG

Intelligent Channel Gate

Speedy Turnstile



Swing Gate Series



Features

1. Adopt industrial grade 32-bit ARM chip, fast response speed and greatly improved processing capacity
2. Using electromagnetic clutch device
3. Angle detection and control by angle encoder, greatly improving the accuracy of the swing angle
4. After swiping the card, the swing arm opens to prompt the pedestrian to pass. After the pedestrian passes, the swing arm automatically closes.
5. If the swing arm is not open, if the swing arm is forced into the swing, the swing arm swings beyond a certain angle and is immediately unlocked to avoid the break of the swing arm and the damage of the traditional swing gate.
6. Anti-reverse, after the card is swiped, only pedestrians are allowed to travel in one direction; if they pass in the opposite direction, an alarm will be issued, and in some cases the swing arm will close quickly.
7. The speed can be adjusted according to the requirements of different places. The switch used for adjustment is built in.
8. After obtaining the permission, if it does not pass within the set time, the access permission will be automatically canceled and the initial state will be restored.
9. Use several pairs of infrared probes to detect various travel states
10. After the power is cut off, the swing arm is in a state of no resistance.

Features

1. Use IC card, ID card, magnetic card or barcode card as automatic identification system to realize access control, attendance or charging function
2. With fault self-test and broadcast function, it greatly facilitates the maintenance and use of equipment.
3. With normally open and normally closed working mode
4. With card memory, why not with memory, users can set online
5. With automatic reset function, after the card is read, when the pedestrian does not pass the time specified by the system, the system automatically passes the permission this time, and the reset time value can be set online.
6. With direction indicator, display the current status of the channel to pedestrians, guide pedestrians correctly, and quickly pass
7. After the system is powered off, the manual opening function is that the channel gate is open and the barrier-free state is formed.
8. Several pairs of infrared probes are used to detect various travel states, protect pedestrians from passing smoothly, and have anti-tailing function.
9. Can be used in the same system as other styles of channel gates
10. It has a unified and standard external electrical interface, which can be connected with other reading and writing devices for easy integration and remote control and management through management computer.

Wing Turnstile Series



Tripod Turnstile



Turnstile Parameter

Structure: 304# stainless steel frame structure and sprayed plastic case
 Turning of the gate: one-way / two-way
 Anti-reverse: with anti-reverse function to ensure one card per person
 Power supply: AC198V~248V, 50Hz±4%, Output: AC24V, DC12V
 Machine consumption: less than 30W when working
 Outdoor: It is recommended to have a ceiling above the gate. When the relative humidity of the environment is less than 45%, the relevant maintenance staff should wear an anti-static wrist strap to open the chassis.
 Passing speed: 35-45 person/minute
 Machine life: 10 years (not consumables)
 Maintenance port: 1
 Net weight of gate: 100kg (excluding control equipment)

Features

Use IC card, ID card, magnetic card or barcode card as automatic identification to achieve access control, attendance or charging function
 With fault self-test and broadcast function, it is convenient to maintain and use equipment
 With normally open and normally closed working mode
 With card memory, and without memory function, users can set online
 With automatic reset function, after the card is read, when the pedestrian is in the time specified by the system, the system automatically cancels the access permission, and the reset time can be set.
 With direction indicator, I want the pedestrian to display the current status of the channel, guiding pedestrians to pass quickly.
 With anti-tailing function, organize pedestrians to enter illegally
 Can be used in the same system with other styles of channel gates
 It has a unified and standard external electrical interface, which can be connected with other reading and writing devices for easy integration and remote control and management through the management computer.

Technical Parameters

Channel width: single pendulum ≤ 600 mm
 Power supply voltage: AC220±10%V, 50Hz
 Working environment humidity: -15 ° C ~ 60 ° C, indoors, outdoor use
 Inspection port: one
 Passing speed: 30 person/minute, gate opening/closing time: 1.2 seconds

Flap Turnstile Series



Half Height/ Full Height Turnstile



Features

With fault self-test and broadcast function, it is convenient to maintain and use equipment. The operating status of the programmable device is via the built-in keypad on the main control board.

Mechanical structure, induction anti-pinch function, when the telescopic arm is reset, it will stop automatically, or the motor will stop working within the default time and reset again after the default delay, and the force is very small (less than 2kg).

Anti-collision function, the wing door is automatically locked when no open signal is received.

After the power is cut off, the channel will automatically open and automatically close after power-on.

Remarks: Expandable functions: 1. Counting function 2. The chassis is lengthened, and the telescopic arm material can be selected.

Technical Parameters

Size: 1200x330x990 mm

Passing speed: 35 people / minute

Input voltage: 100V ~ 220V

Ambient temperature: -25°C ~ 70°C

Open brake signal input: 12V solder joint

Unlocking time: 0.2 s

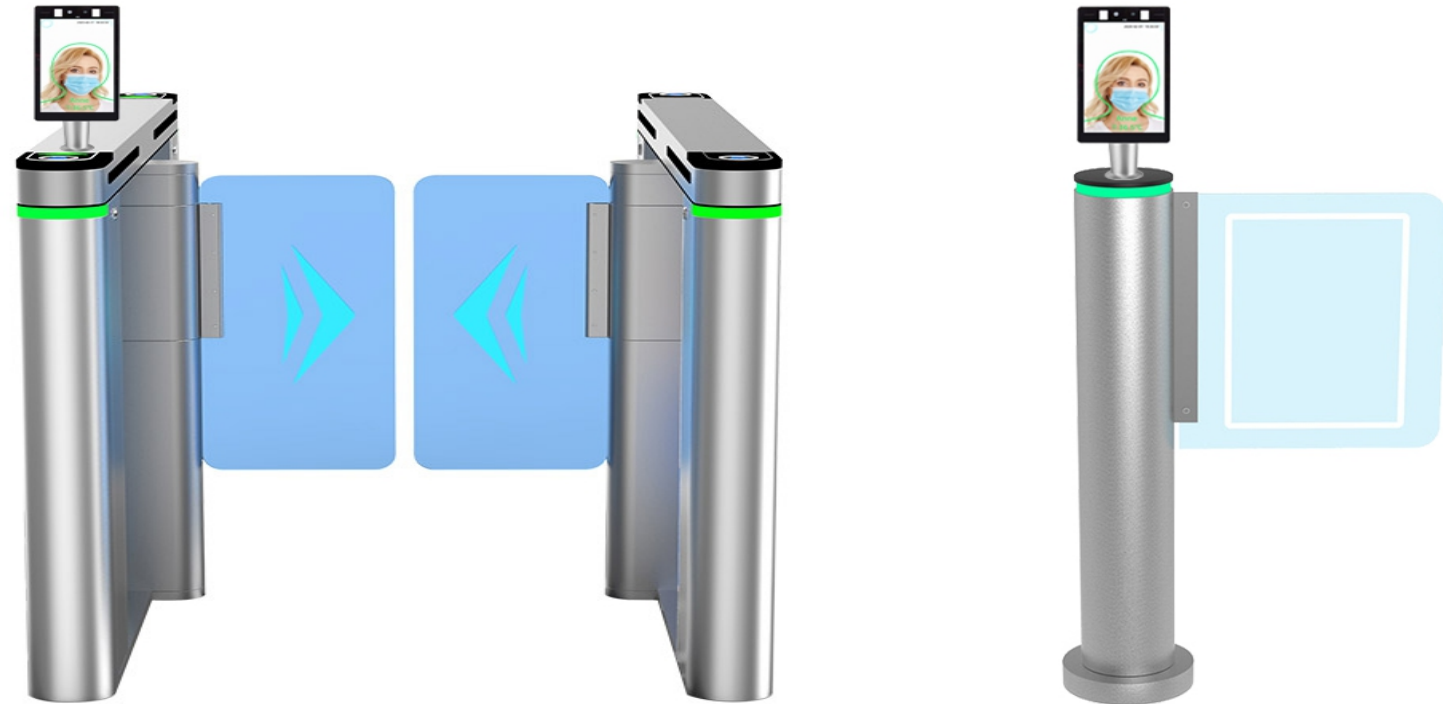
Channel width: ≤600 mm

Drive voltage: 24V

Power: 30W



Temperature Measuring Face Recognition



Product Features

- 1.Support camera to capture face to activate device;
- 2.Human body temperature detection using thermal imaging; with access control attendance function;
- 3.Automatic alarm when human body temperature is higher than 37.3 (customizable temperature value);
- 4.Using RGB and living body dynamic binocular camera;
- 5.Supports serial port, Wigan 26, 34 input and output;
- 6.Using video stream-based dynamic face detection,tracking recognition algorithm;
- 7.Support device local storage of 10,000 face libraries;
- 8.When the face database is 3,000 , misrecognition rate is 3 in 10,000, 1: N recognition accuracy rate is 99.7%;
- 9.Fast recognition speed: (a) face tracking and detection takes about 20ms, (b) face feature extraction takes about 200ms, (c) face comparison takes about 0.2ms(1000 people database, multiple identification to get the average), 0.5ms(10,000 face database,multiple identification to get the average);
- 10.Binocular with infrared fill light camera;
- 11.Support live photo saving during face recognition or stranger detection;
- 12.Support HTTP Interface connection;
13. Support public network and local area network deployment;



Product Parameter

Screen size: 8 inch
Device size:240*120*24mm
Power supply:DC12V (±10%)
System:Android
Screen resolution:800*1028 HD screen
Operating temperature:-10~60°C
Working humidity:10%~90 %

Temperature Measuring Gate

Product Parameter

Temperature detection tolerance: $\pm 0.5^{\circ}\text{C}$ (at room temperature)

Voltage: AC180V ~ 250V, 50-60HZ

Power: 200W

Net weight: 50kg

Inner frame dimension: 2000mm(H) \times 700mm(W) \times 500mm (d)

Outer frame dimension: 2270mm(H) \times 830mm(W) \times 500mm (d)

Carton package: 2220mm(H) \times 550mm(W) \times 320mm (d), 66kg

Wooden package: 2420mm(H) \times 750mm(W) \times 520mm (d), 95KG



Temperature Measuring Control box



Product Features

1. Non-contact, fast detection
2. Height can be adjusted
3. Plug and Play
4. Accurate and fast temperature measurement
5. Normal walking speed, easy and convenient
6. Real-time temperature display, sound & light alarm for high temp
7. reduce artificial temp, measurement to avoid cross-infection

Product Parameter

Temperature detection tolerance: $\pm 0.5^{\circ}\text{C}$ (at room temperature)

Voltage: AC180V ~ 250V, 50-60HZ

Power: 200W

Net weight: 5kg

Control box dimension: 340mm (H) \times 130mm (W) \times 55mm (d)

Carton package: 700mm (H) \times 300mm (W) \times 200mm (d), 7KG

Thermal & Optical Bi-spectrum Network Bullet Camera



High sensitivity thermal module with 256 x 192 resolution NETD is less than 60 mk (@25° C, F#=1.0)
 Supports contrast adjustment
 Leading thermal image processing technology: Adaptive AGC, DDE, 3D DNR Up to 15 palettes of adjustable color
 Reliable temperature-anomaly alarm Temperature Range From -15°C to +150°C High quality optical module with 2 MP resolution
 Bi-spectrum image fusion, picture-in-picture preview



Specifications

Thermal	
Image Sensor	VOx Uncooled Focal Plane Arrays
Resolution	256x192
Pixel Interval	12µm
NETD	Less than 60 mK (@25 °C,F#=1.1)
Aperture	F1.0
Field of View	35° ×27° (H ×V)
Optical	
Image Sensor	1/2.8"2.0M Pixel CMOS
Resolution	1920x1080P
Min. Illumination	Color: 0.005Lux@ (F1.2, AGC ON), B/W: 0.001 Lux @ (F1.2, AGC ON)
Field of View	84° ×45° (H ×V)
Focal Length	4mm
Shutter Speed	1s to 1/100,000s
White Balance	Auto/Manual/ATW(Auto-tracking White Balance)/Indoor/Outdoor/Daylight/Sodium Lamp
Day & Night	ModeIR cut filter with auto switch
WDR	80 dB
Feature	
Bi-spectrum Image Fusion	Fusion view of thermal view and overlaid details of the optical channel
Picture in Picture	Combines details of thermal and optical image PIP, overlay thermal image on optical image
Smart Function	
Face snapping	Built-in deep learning AI algorithm, Supports simultaneous detection of 20-30 faces
Temperature Measurement	Support global and local temperature
Temperature Range	From -15°C to +150°C
Temperature Accuracy	Target temperature 35°C ^ 38°C ±0.3 °C Target temperature 20°C ^ 33°C ±0.6 °C Target temperature 38°C ^ 50°C ±0.6 °C
Network	
Main Stream	Thermal: 25fps(1920×1080, 1280×720)
Sub Stream	Thermal: 25fps(704×576, 352×288)
Video Compression	H.264 (Baseline/Main/HighProfile) /MJPEG/H.265
Audio Compression	G.711u/G.711a/G.722.1/MP2L2/G.726/PCM
Protocols	TCP/IP, ONVIF, GB/T 28181, DHCP, RTP, RTSP, PPPoE, UPnP, UDP
API	ONVIF (Profile S, Profile G, Profile T), SDK
General	
Web Client Language	languages English, Chinese
Power	DC 12V, 0.65A
Work Temperature/Humidity	From -20°C to 55°C; Humidity: 95% or Less
Protection Level	IP67
Dimension	246 mm ×101 mm ×81 mm (with bracket)
Weight	Approx. 1.0 kg